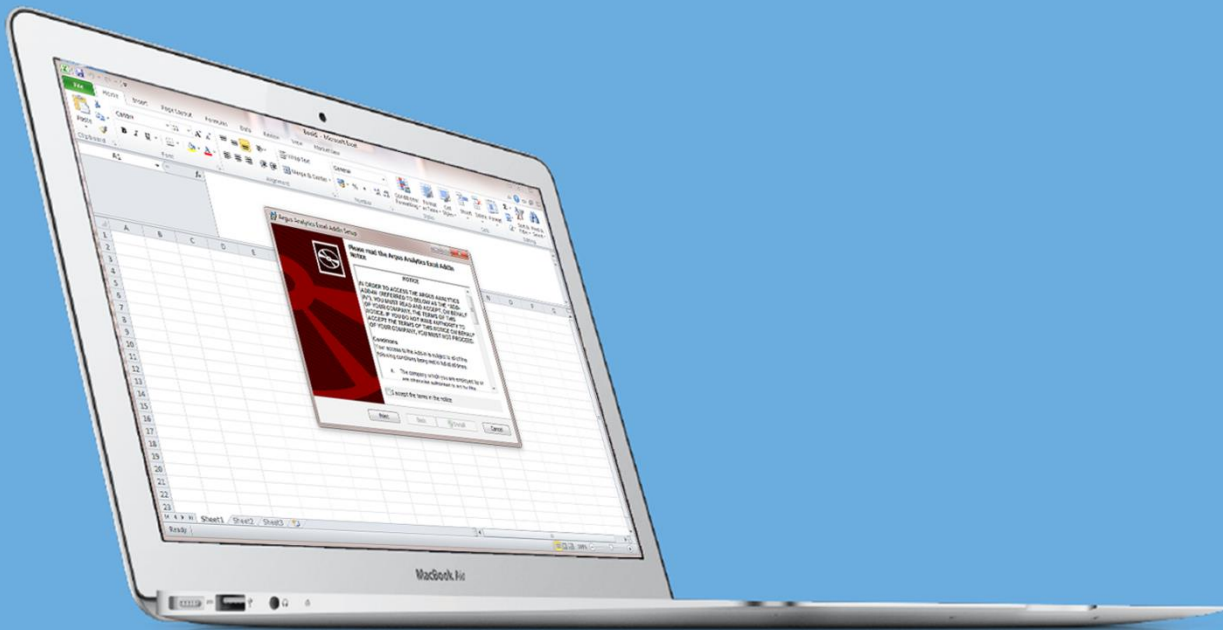


Argus direct

Web | Mobile | Alerts

Argus Analytics Installation Guide

This installation guide will walk you through the multiple options of installing the Argus Analytics Excel addin



Sections in this manual

About the Installers – which installer is right for you?	2
Argus Analytics Install	2
Argus Analytics Admin Install (For Enterprise Administrators)	2
Argus Analytics Install	3
Argus Analytics Install – Step-by-step guide	3
Argus Analytics Admin Install (For Enterprise Administrators)	5
Argus Analytics Admin Install – Step-by-step guide	5
NOTE: Microsoft Excel Security Notice	8

About the Installers – which installer is right for you?

There are three installation options available.

1. Argus Analytics Install
2. Argus Analytics Admin Install (for Enterprise Administrators)

Argus Analytics Install

A simple and quick installation that does *not* require local administrator rights on your computer.

If the install fails try the Admin or XLL installations.

Argus Analytics Admin Install (For Enterprise Administrators)

This option *does* require local administrator rights on your computer. If you wish to use this installer without admin rights contact your company helpdesk.

This install is typically used by Enterprise Administrators who will roll out the add-in to multiple users.

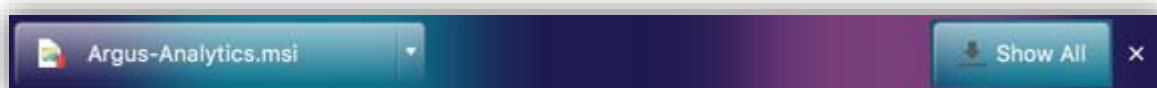
If all methods of installation have proved unsuccessful please email helpdesk@argusmedia.com who'll be able to help.

Argus Analytics Install

This option does *not* require you to have local administrator rights on your computer. It's a quick install and only requires a few clicks.

Argus Analytics Install – Step-by-step guide

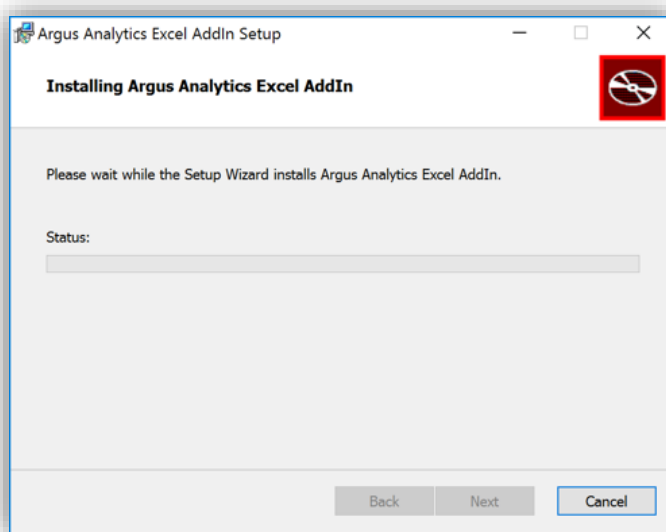
1. Click on the **Download Argus Analytics install** link on the <http://argusmedia.com/Argus-Analytics/> site.
2. An Argus-Analytics.msi file will download. Once downloaded click on the file, or click RUN, to start the installation process. Chrome browser example as follows:



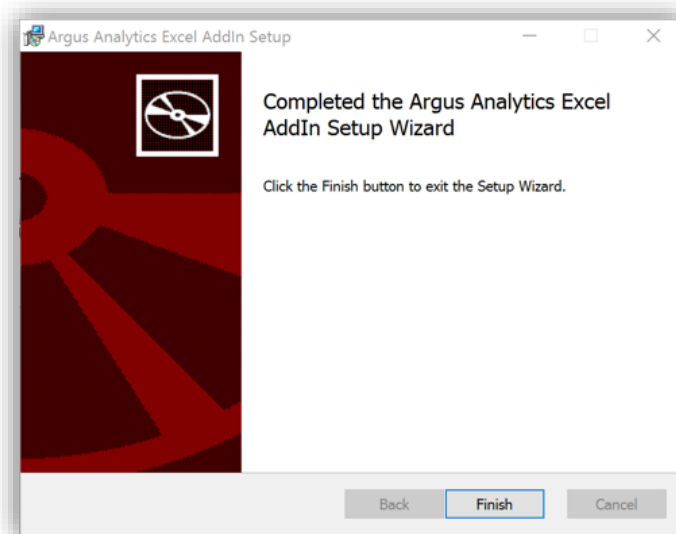
3. The Argus Analytics Excel add-in Setup is launched. Please read the notice text and click the checkbox to accept the terms of the notice, then click on **Install**



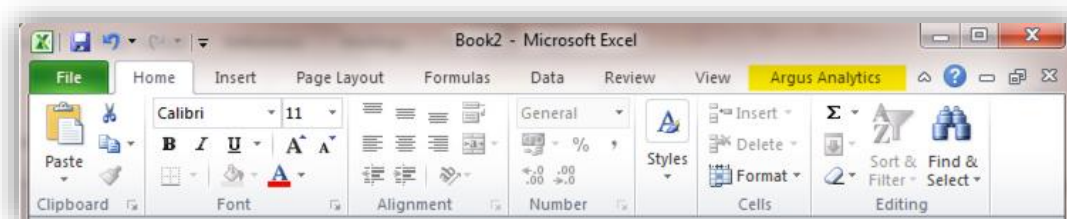
- The install runs, which can take a few minutes.



- Once installed a **Completed** dialogue will be displayed. Please click Finish and restart Excel.



- Installation complete! Open Excel and the Argus Analytics add-in will be visible in the navigation ribbon.



Argus Analytics Admin Install (For Enterprise Administrators)

This option *does* require you to have local administrator rights on your computer. If you wish to use this installer without admin rights, contact your company helpdesk who can help.

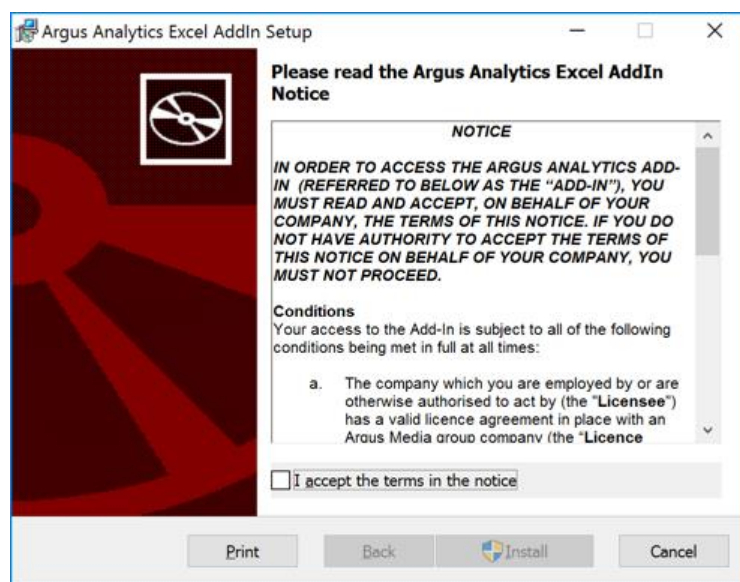
This install is typically used by Enterprise Administrators who will roll out the add-in to multiple users.

Argus Analytics Admin Install – Step-by-step guide

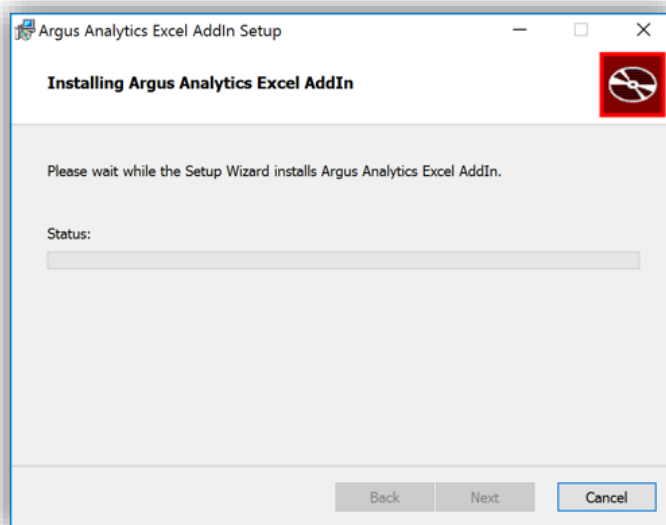
1. Click on the **Download Argus Analytics Admin install** link on the <http://argusmedia.com/Argus-Analytics/> site.
2. An Argus-Analytics-Analytics.msi file will download. Once downloaded, click on the downloaded.msi file to start the installation process. Chrome browser example as follows.



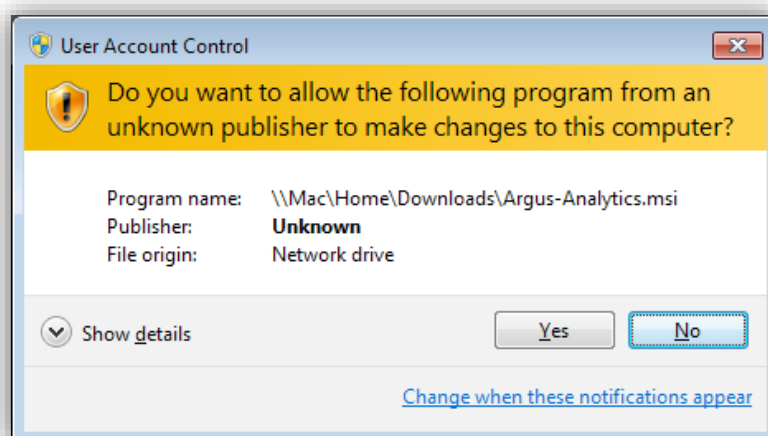
3. The Argus Analytics Excel add-in Setup is launched. Please read the notice text and click the checkbox to accept the terms of the notice, then click on **Install**.



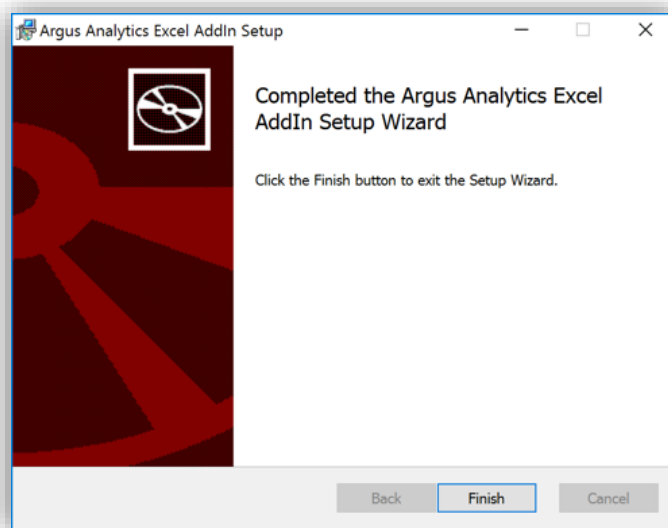
4. The install runs, which can take a few minutes.



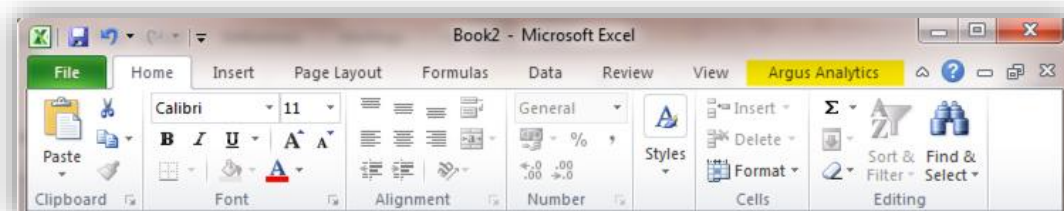
NOTE: Depending on your computer settings you may be prompted for confirmation you want to make changes to your computer. Click yes.



5. You may be required to confirm you are an Admin user of your machine. Enter your local admin user details.
6. Install complete. Click Finish.



7. Installation complete! Open Excel and the Argus Analytics add-in will be visible in the navigation ribbon.



NOTE: Microsoft Excel Security Notice

1. Microsoft Excel may prompt you to trust the publisher in order to install the add-in.
To show the add-in every time you open Excel click **Enable all code published by this publisher (recommended)**.
To enable the add-in for this session only click **Enable this add-in for this session only**.
If you've changed your mind and don't want to run the add-in click **Leave the add-in disabled**.

