

# Argus Direct add-in for spreadsheets - Installation Guide

---

The add-in enables you to download Argus data that you are permissioned for directly in Excel spreadsheets. The spreadsheet can be refreshed to perform analysis with the latest data.

This document will take you through the steps required to install the add-in .

**Please close all your open Excel spreadsheets before starting the installation. If you have installed ArgusLink previously, please uninstall it first. Please [click](#) here to review how to uninstall the add-in**

## Install the new Argus Direct add-in

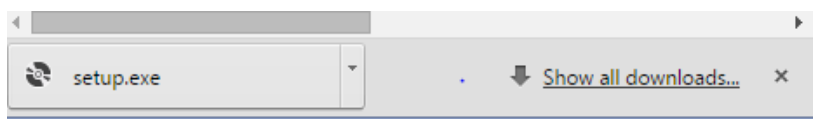
The add-in requires certain software to work correctly. These programmes are standard Microsoft software and if you do not have them installed already on your computer, they will be installed together with the add-in. .

1. *A Microsoft Windows 10, 8, 7 or Vista PC*
2. *Microsoft Excel 2016, Microsoft Excel 2013, Microsoft Excel 2010 or Microsoft Excel 2007*
3. *Active internet connection (HTTP port 80 or HTTPS port 443)*
4. Microsoft .NET Framework v4.6
5. Microsoft Visual Studio 2010 Tools for Office
6. Office Primary Interop Assemblies

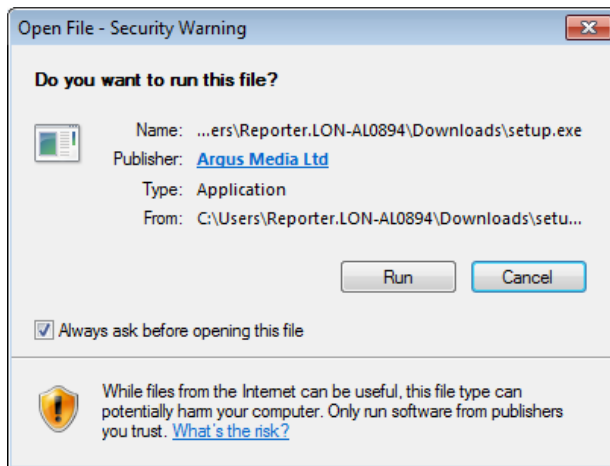
If you do not have software 4, 5 or 6 installed on your computer, they will be installed together with the add-in.

**Please click [here](#) or visit <http://www.argusmedia.com/Direct/Argus-Direct-Spreadsheets> to install Argus Direct.**

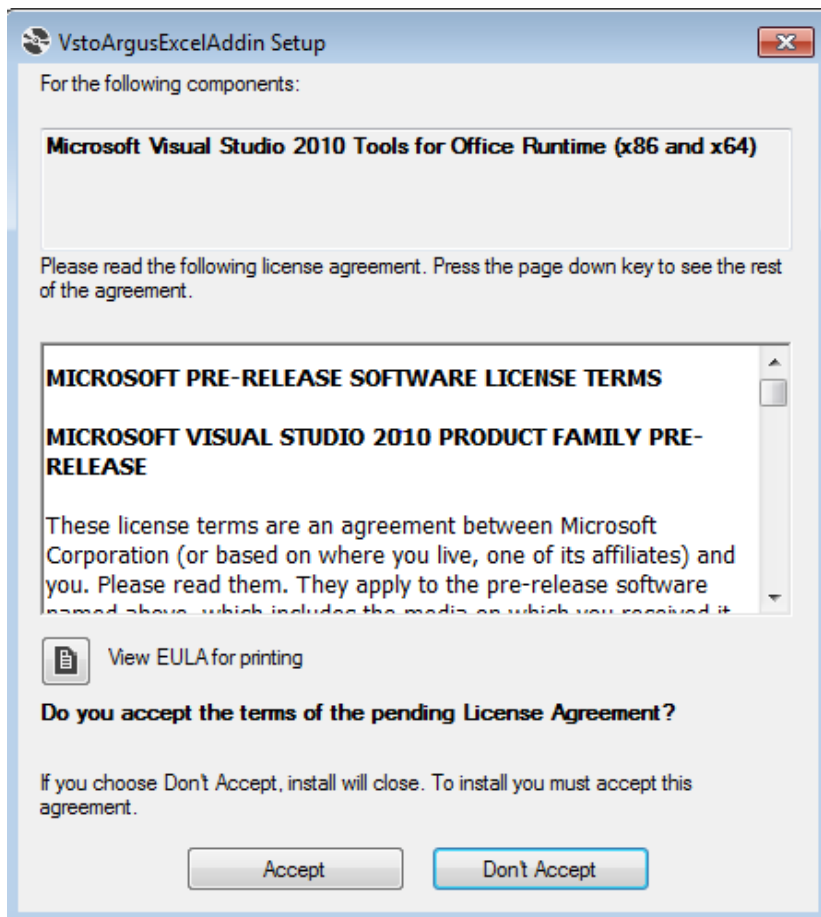
A file will be downloaded and should appear at the bottom of the webpage.



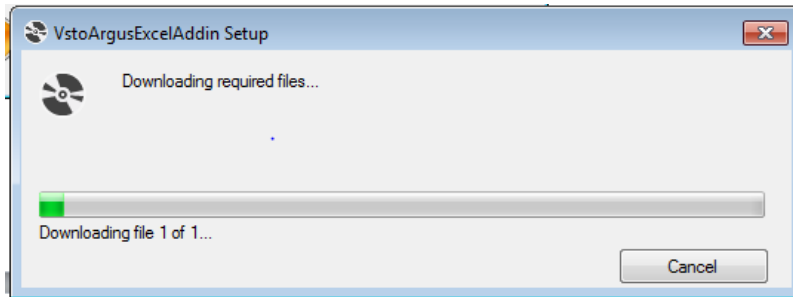
Double click on the file setup.exe. A warning pop-up will appear, please click **run**



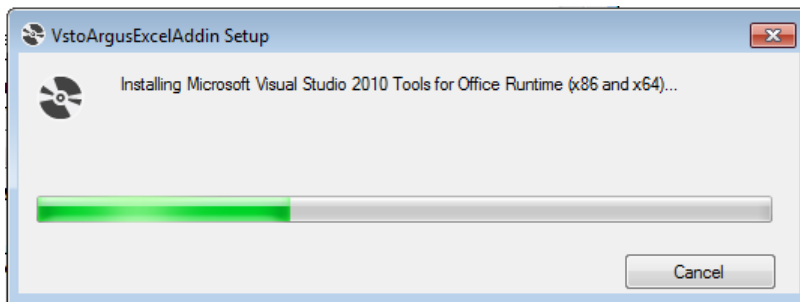
If Microsoft Visual Studio 2010 is not already installed on your computer, you will be asked to accept the License Agreement for Visual Studio. Please click **Accept**.



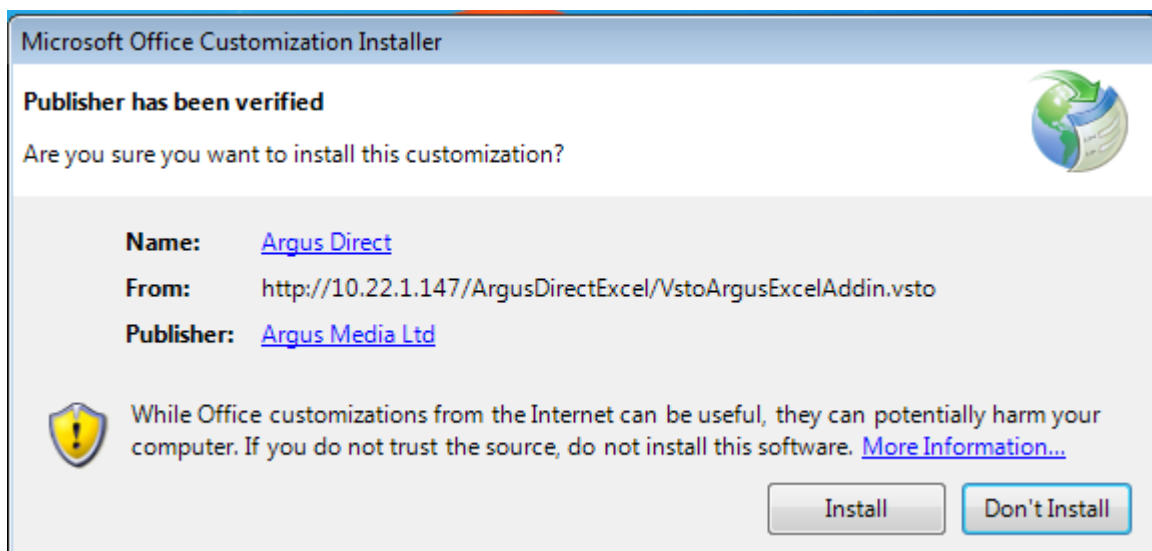
Wait until all software is installed

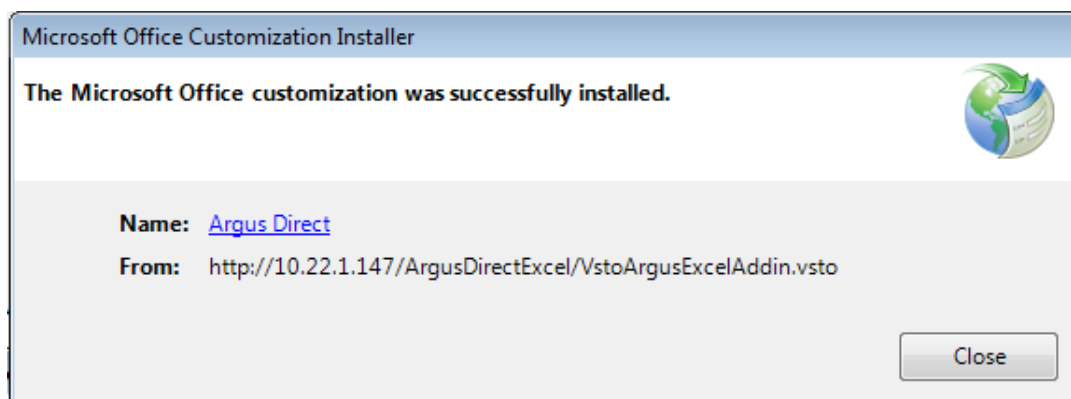
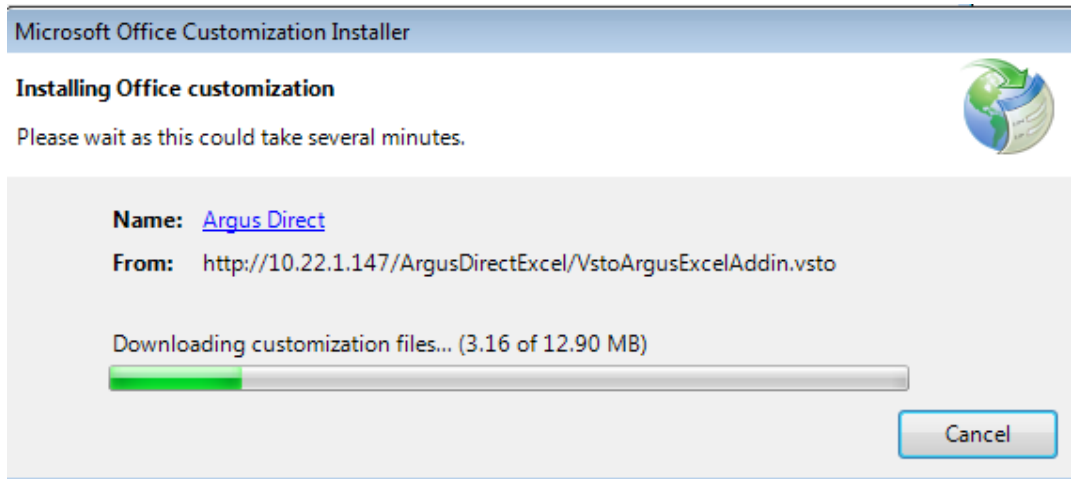


Once Visual Studio is installed , please click **yes** when the Microsoft pop-up asks you if it can access your computer.

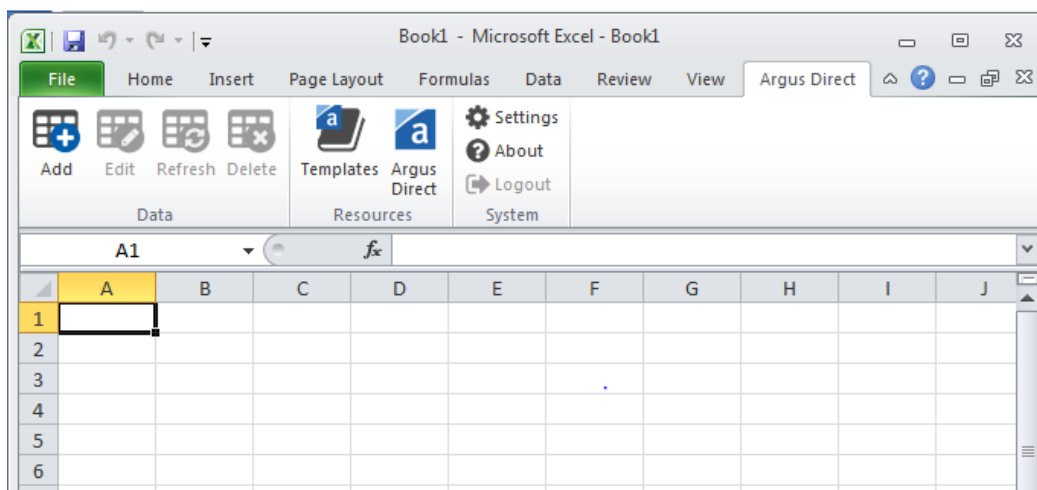


Visual Studio is now installed. Please proceed to install the add-in by clicking **Install** when the pop up below appears.

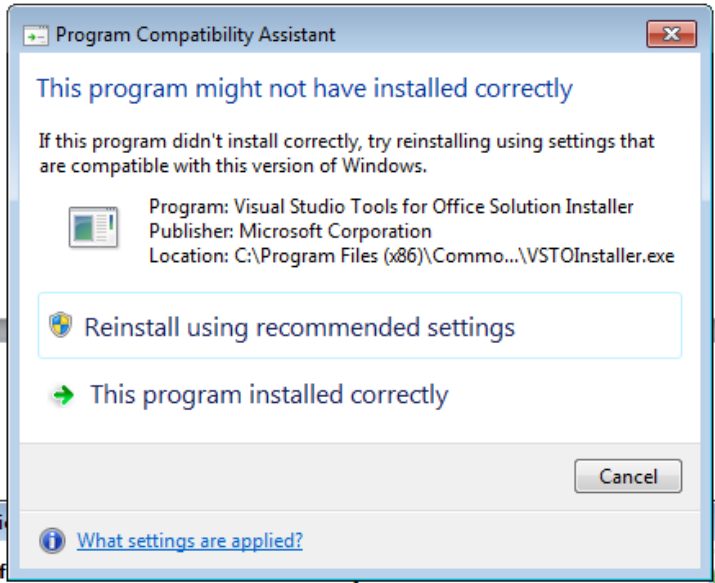




**You are ready to open a new spreadsheet and start using the Argus Direct add-in tool!** At first launch, it will take time to download all the data – subsequent launches of the tool will be considerably faster. Please note that you will also be asked to accept the T&Cs, these are the same than for your subscription.



If, when opening Excel, the Program Compatibility Assistant appears, please ignore and click this program installed correctly.



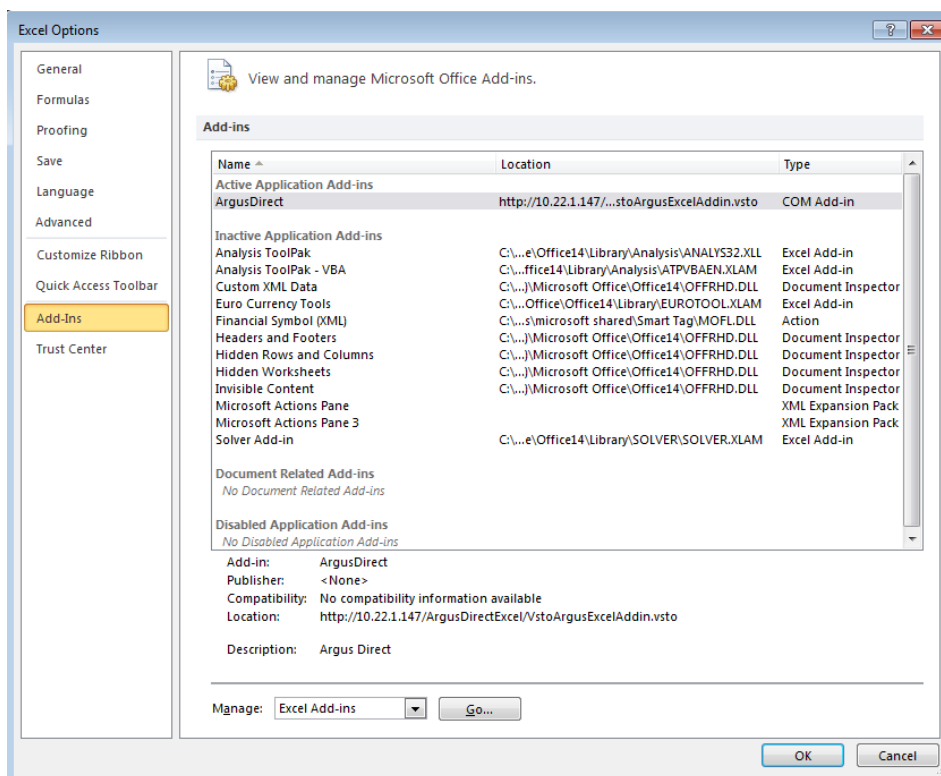
## Frequently Asked Questions

### I am asked for log in details – but my login details do not work, what shall I do?

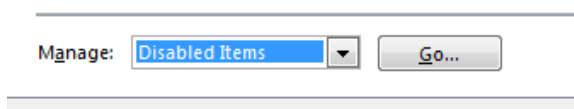
Please contact your IT department. In corporate networks, computer usage policies and software management controls often require software to be installed by authorised network personnel only.

### I have installed the add-in but the menus and tools bars are not displayed in Excel

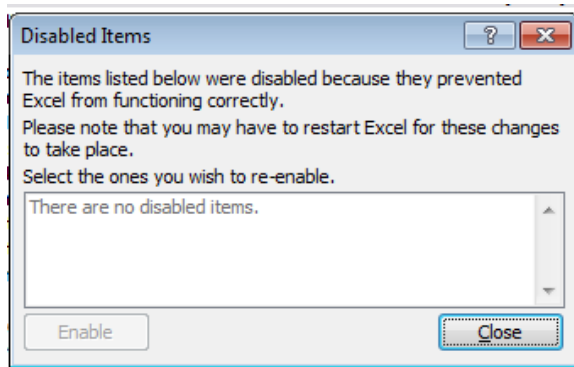
Excel has a feature to disable 3<sup>rd</sup> party software add-ins. To enable the add-in, go to Excel > File > Options. Select Add-Ins in the menu on the left.



Select Disable Items in the Manage Drop down, click go.



Select the add-in and click **enable**. Restart Excel.



### **The add-in is installed twice**

For users of early versions of the add-in (Argus Link or Argus Direct), the add-in could be installed twice, preventing either from working. If the add-in appears twice in the control panel add or remove programs, uninstall both versions and re-install from the download location.

### **I have been asked to update the add-in, what shall I do?**

From time to time the add-in is updated. The add-in will detect the existence of a newer version at this stage the user may either update or ignore the notice. If you ignore the update, the next time you start Excel and use the add-in you will be prompted to update again. Argus advises clients to keep the add-in fully updated as older versions might not function properly.

### **I have tried to update but it failed.**

Once you select update you must close Excel before selecting the "Run" option. You can "Save" the new add-in and install later if you wish.

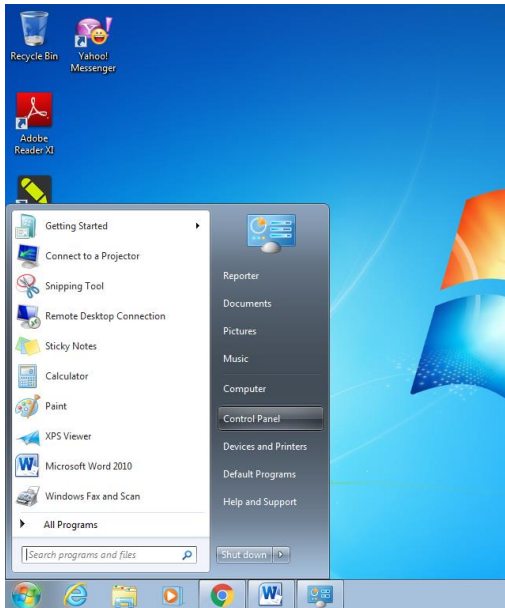
### **Can my colleagues access the add-in after I installed it?**

No, your colleagues will have to download the add-in on their machine. The add-in installs into your user's profile folder, so only the user who installed it will have access to it.

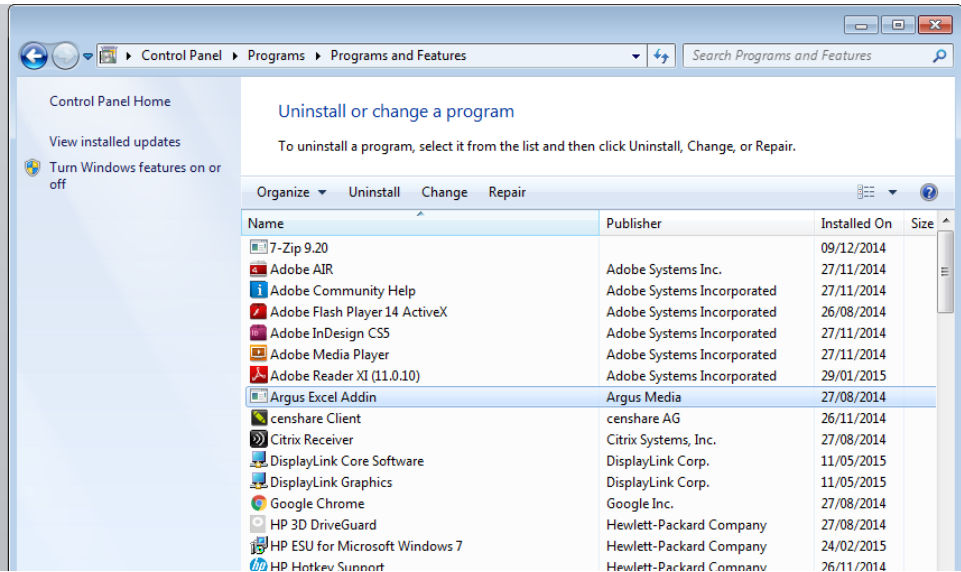
## Uninstall the previous Argus add-in

If you have installed Argus Link previously on your machine, please uninstall the add-in first. This requires Administration rights and you might need to contact your IT department.

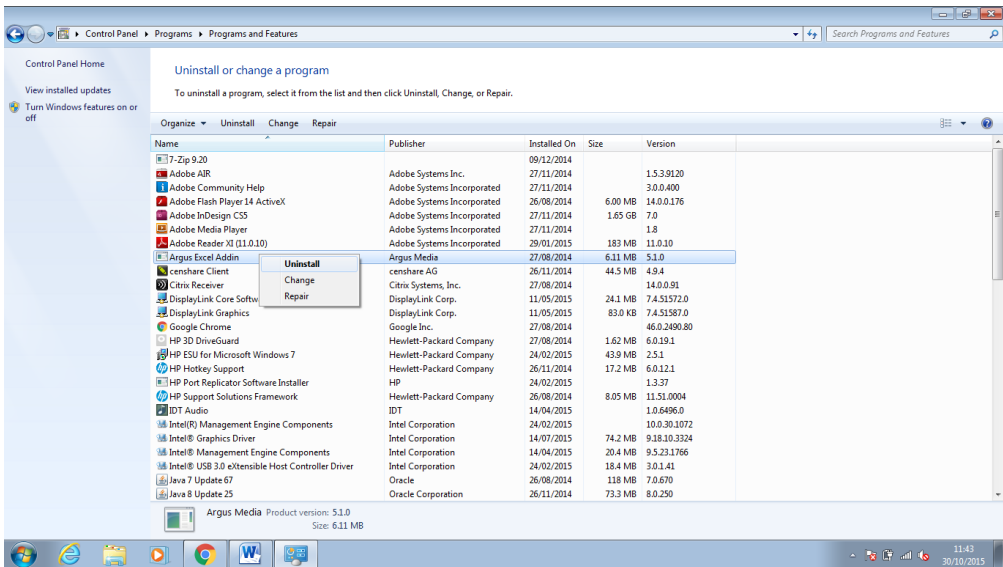
The previous add-in needs to be uninstalled from your computer first. To do so please click this [link](#) or go to Home>Control Panel>Programs> Uninstall a program>Argus Direct or Arguslink or Argus Excel Addin.







Click right with your mouse on the add-in name – here Argus Excel Addin, and choose **uninstall**



When the add-in is successfully uninstalled, please install the new version.